

Analysis Report

Prepared For: _____

Prepared By: _____

Analytical method

Mobile Phase A: 0.1% Formic Acid in Water

Mobile Phase B: 0.1% Formic Acid in Acetonitrile

Testing Site and Date

Testing Site: _____ Testing Date: 09/15/14

Analyte

Name: Testosterone propionate (TP)

Condition while received: Well

Storage Condition after received: Room Temperature

There was no discrepancy when sample received.

Analytical Instrument

Equipment: High-Performance Liquid Chromatography with Mass Spectrometric
(MS/MS) Detection

ID Number: HPLC-023/MSMS-017

Software: MassLynx v.4.1

Result (original mass-spectrogram see attachment):

The sample has same Mass Transition with the standard

The compound in sample is Testosterone propionate

Assay Percent%: 98.5

Analyst: _____

Date: 09/15/14

Auditor: _____

Date: 09/15/14

Testosterone propionate (TP)

Molecular weight: 344.49

HPLC-023 Condition

Solvent A: 0.1% Formic Acid in Water

Solvent B: 0.1% Formic Acid in Acetonitrile

Mobile Phase: Solvent A:Solvent B (5:95, v/v)

Flow Rate (mL/min): 0.300

MSMS-0117 Condition:

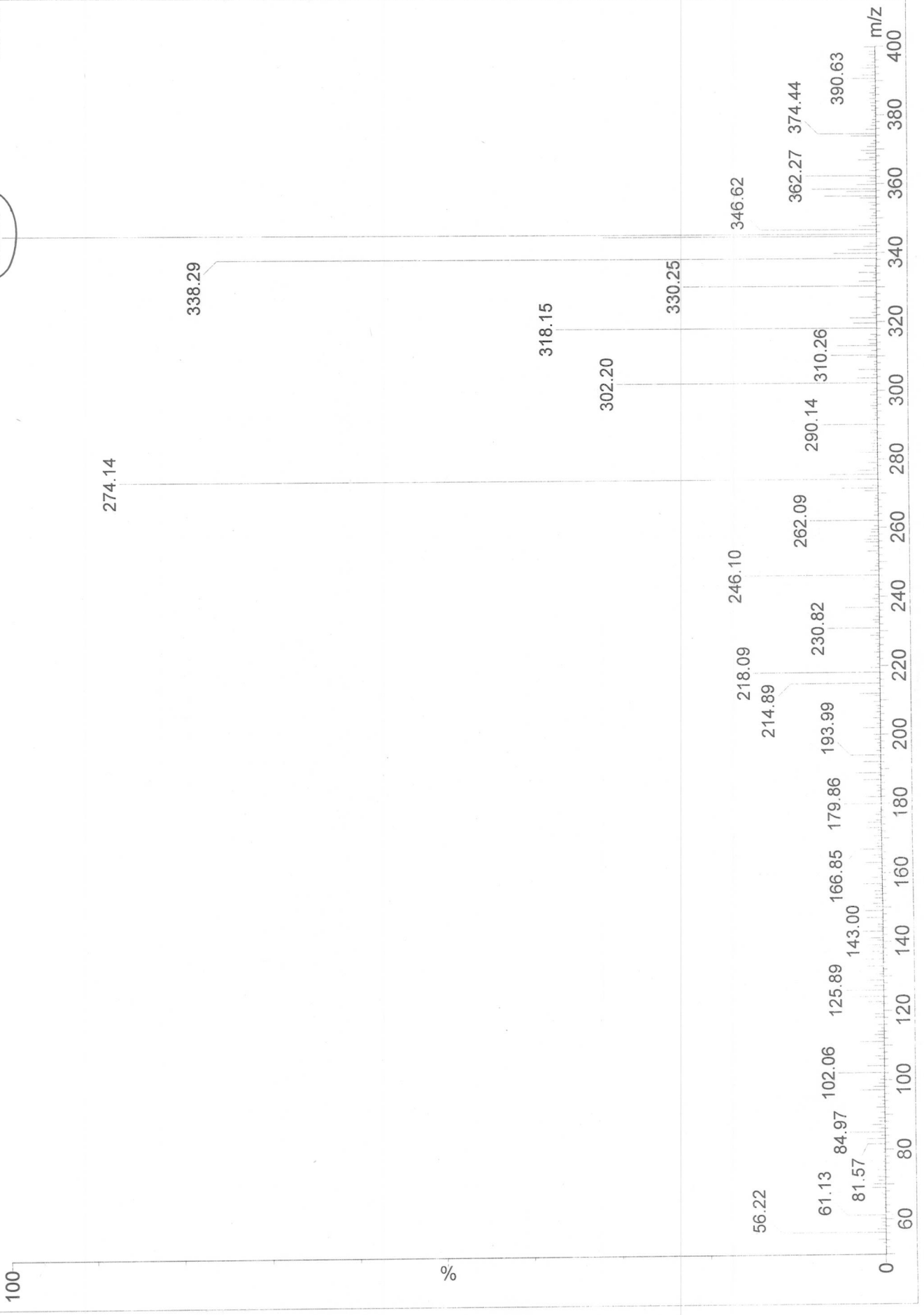
Cone (V)	15
Collision (eV)	15
Dwell Time (secs)	0.3
Delay Time (secs)	0.00
Ionization Mode	ES+
Source Temperature	130
Desolvation	350
Cone Gas (L/hr)	80
Desolvation Gas	798
Capillary (kV)	3.5
Hex 1 (V)	35
Aperture (V)	0.5
Hex 2 (V)	1.0
LM/HM Resolution 1	12.0
Ion Energy 1 (V)	0.0
LM/HM Resolution 2	12.0
Ion Energy 2 (V)	1.0
Entrance	-1.0
Exit	1.0
Multiplier (V)	650

	Standard	Sample
Mass Transition	345.31>96.98	345.27>96.98

TP

TP STANDARD01 2 (0.079) Cm (1:6)

Scan ES+
5.07e7



TP 25

TP STANDARD02 5 (0.185) Cm (1:6)

100

96.98

108.93

%

57.15

81.07

79.01

122.95

132.93

144.94

158.87

174.94

196.90

210.85

224.90

253.00

270.91

284.19

328.13

345.66

379.59

0

60

80

100

120

140

160

180

200

220

240

260

280

300

320

340

360

380

400

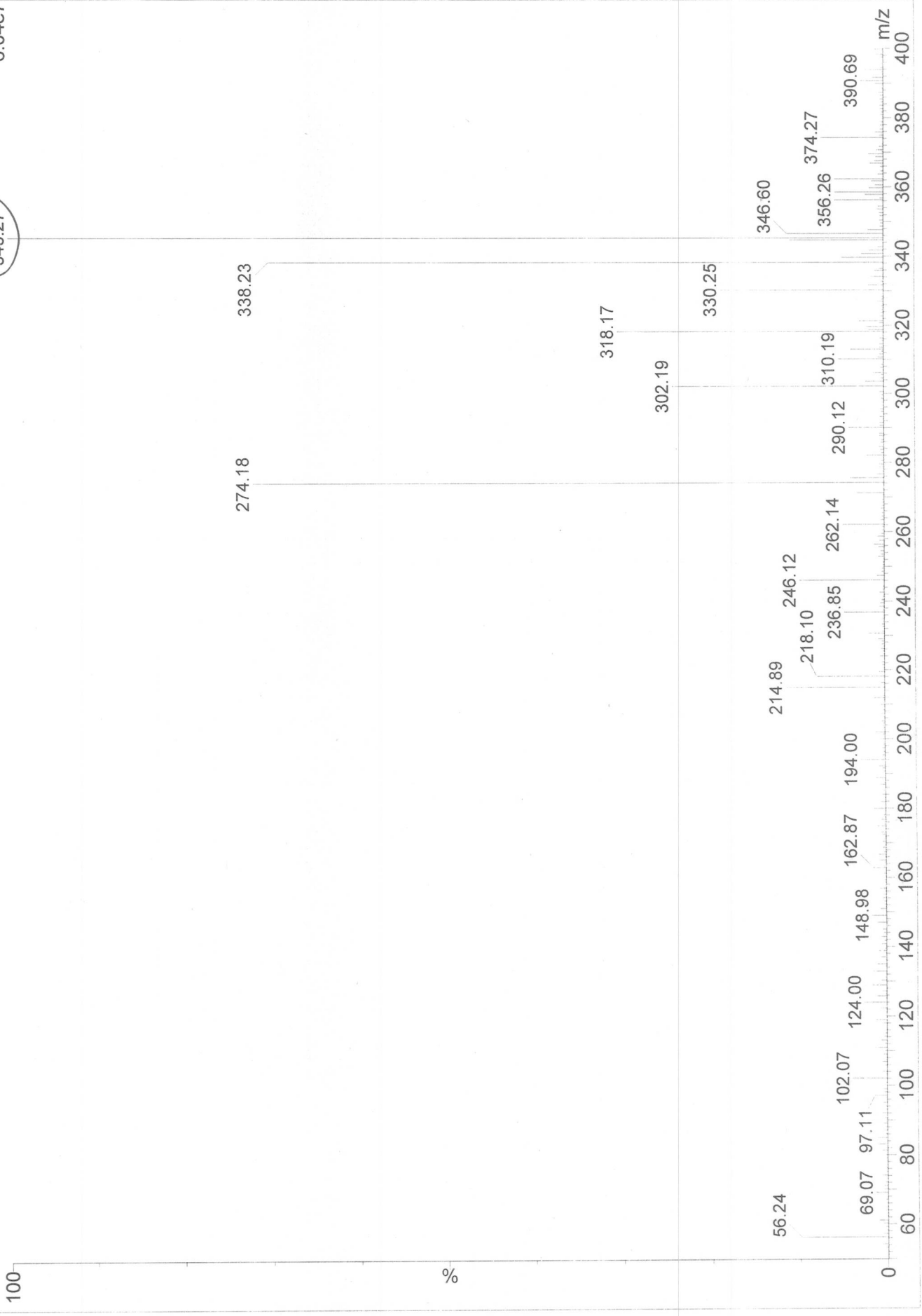
m/z

Daughters of 345ES+
3.16e6

TP

TPSAMPLE01 4 (0.150) Cm (1:6)

Scan ES+
6.04e7



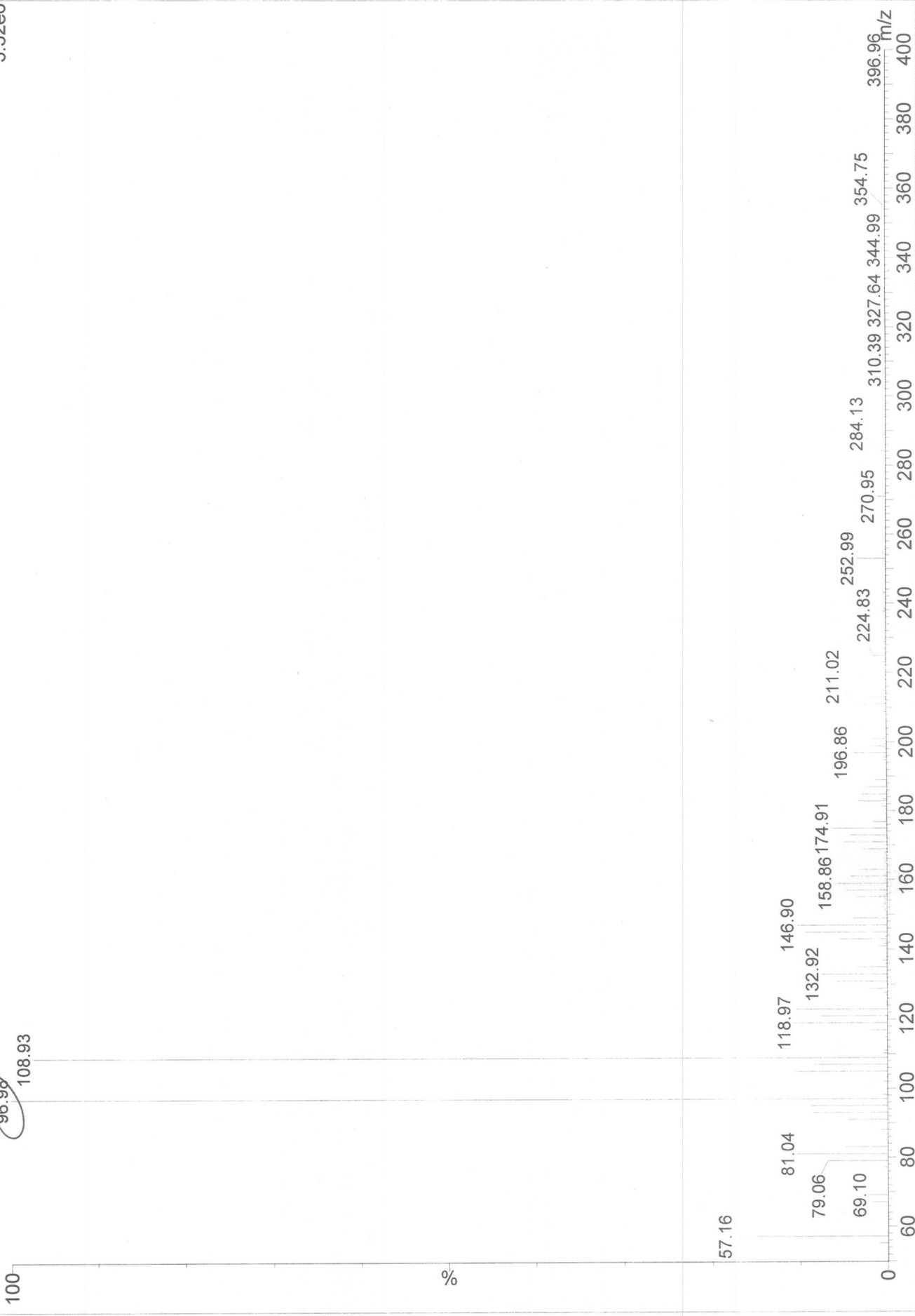
TP 25

TPSAMPLE02 5 (0.185) Gm (1:6)

96.98

108.93

Daughters of 345ES+
3.32e6



Quantify Compound Summary Report **MassLynx 4.1**

Dataset: [REDACTED]
Signature: At Monday, September 15, 2014 13:30:03 China Standard Time
 By [REDACTED]
 Reason processing data
Printed: At Monday, September 15, 2014 17:05:21 China Standard Time
 By [REDACTED]

Method: [REDACTED] **15 Sep 2014 09:59:15**
Calibration: 15 Sep 2014 12:44:53

Compound name: TP
Correlation coefficient: $r = 0.998043$, $r^2 = 0.996090$
Calibration curve: $1.0998 * x + 6.8631$
Response type: External Std, Area
Curve type: Linear, Origin: Exclude, Weighting: Null, Axis trans: Ln

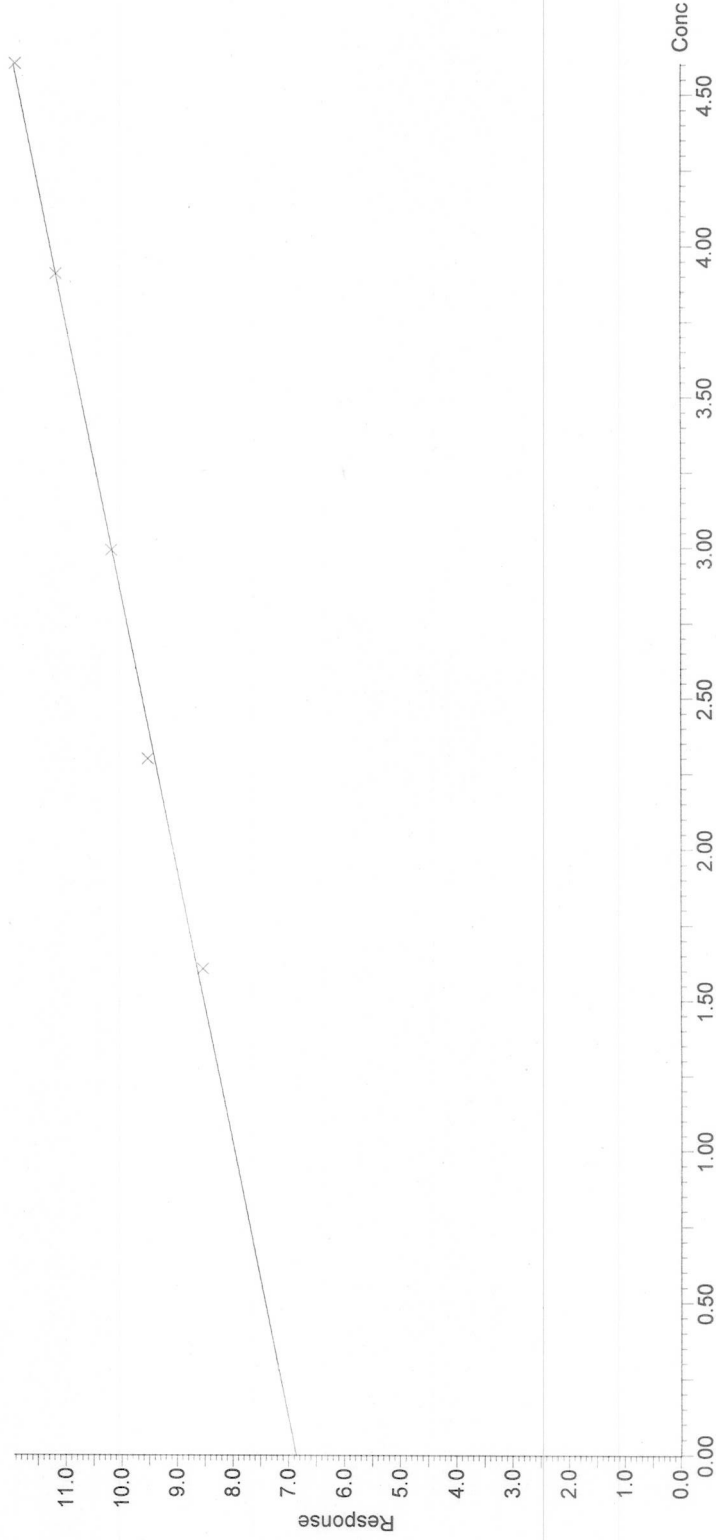
#	Sample Text	ID	Type	Area	Conc.	%Dev.	Factor1	RT	Primary Flags	Response
1	TP Std 5.00 ng/mL	W1	Standard	5067	4.55	-8.91	1.0	3.37	bb	5067.056
2	TP Std 10.0 ng/mL	W2	Standard	13643	11.2	12.1	1.0	3.38	bb	13643.292
3	TP Std 20.0 ng/mL	W3	Standard	26140	20.2	1.23	1.0	3.38	bb	26139.838
4	TP Std 50.0 ng/mL	W4	Standard	70344	49.8	-0.399	1.0	3.38	bb	70344.281
5	TP Std 100 ng/mL	W5	Standard	146682	97.1	-2.86	1.0	3.38	bb	146682.328
6	TP Sample 20.0 ng/mL		Analyte	24401	19.0		1.0	3.38	bb	24400.762
7	TP Sample 20.0 ng/mL		Analyte	27780	21.4		1.0	3.39	bb	27779.973
8	TP Sample 20.0 ng/mL		Analyte	23951	18.7		1.0	3.39	bb	23951.242

Quantify Calibration Report MassLynx 4.1

Dataset: [REDACTED]
Signature: At Monday, September 15, 2014 13:30:03 China Standard Time
By [REDACTED]
Reason processing data
Printed: At Monday, September 15, 2014 17:05:08 China Standard Time
By [REDACTED]

Method: [REDACTED] 15 Sep 2014 09:59:15
Calibration: 15 Sep 2014 12:44:53

Compound name: TP
Correlation coefficient: $r = 0.998043$, $r^2 = 0.996090$
Calibration curve: $1.0998 * x + 6.8631$
Response type: External Std, Area
Curve type: Linear, Origin: Exclude, Weighting: Null, Axis trans: Ln

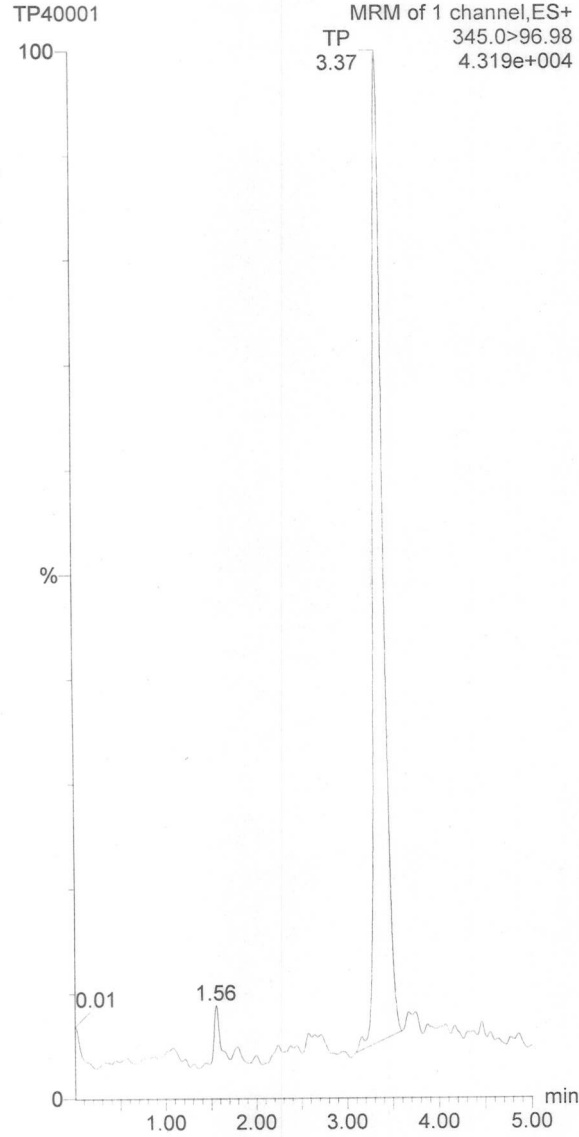


Dataset:
Signature: At Monday, September 15, 2014 13:30:03 China Standard Time
By
Reason processing data
Printed: At Monday, September 15, 2014 17:14:40 China Standard Time
By

Method: 15 Sep 2014 09:59:15
Calibration: 15 Sep 2014 12:44:53

Name: TP40001, Date: 15-Sep-2014, Time: 10:11:52, ID: W1, Description: TP Std 5.00 ng/mL

TP



#	Name	Area	Conc.	RT.	Primary Flags
1	TP	5067	4.6	3.37	bb

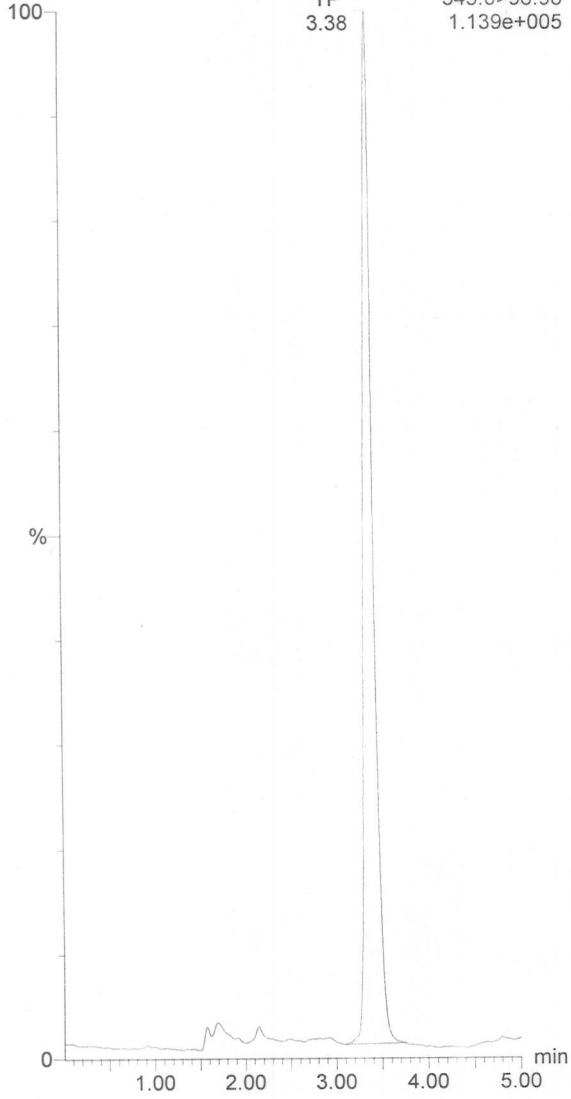
Dataset:
Signature: At Monday, September 15, 2014 13:30:03 China Standard Time
By
Reason processing data
Printed: At Monday, September 15, 2014 17:14:40 China Standard Time
By

Name: TP40002, Date: 15-Sep-2014, Time: 10:17:32, ID: W2, Description: TP Std 10.0 ng/mL

TP

TP40002

MRM of 1 channel, ES+
TP 345.0>96.98
3.38 1.139e+005



# Name	Area	Conc.	RT.	Primary Flags
1 TP	13643	11.2	3.38	bb

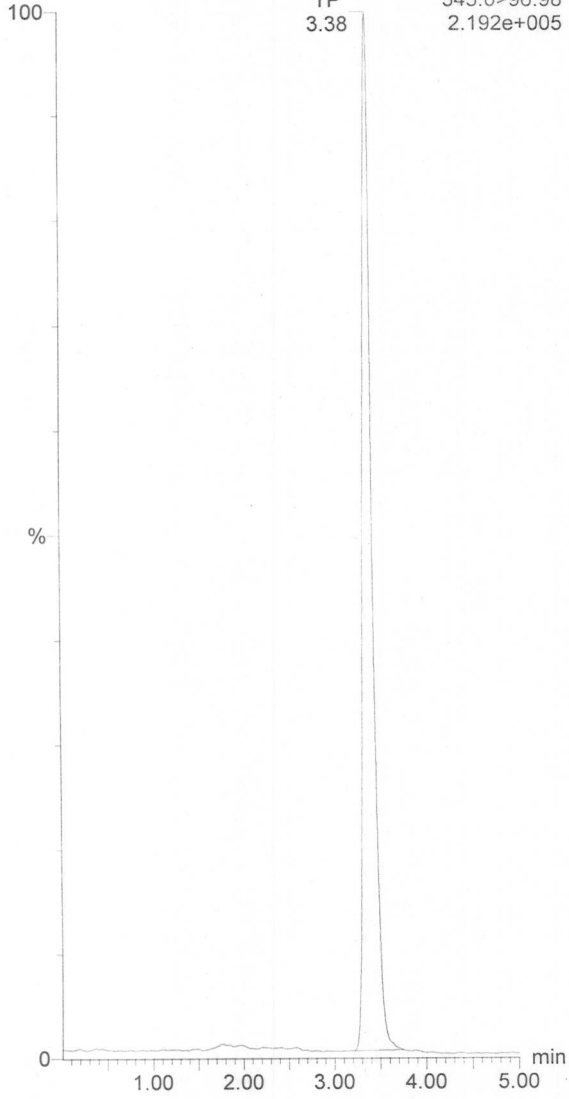
Dataset:
Signature: At Monday, September 15, 2014 13:30:03 China Standard Time
By
Reason processing data
Printed: At Monday, September 15, 2014 17:14:40 China Standard Time
By

Name: TP40003, Date: 15-Sep-2014, Time: 10:23:12, ID: W3, Description: TP Std 20.0 ng/mL

TP

TP40003

MRM of 1 channel, ES+
TP 345.0>96.98
3.38 2.192e+005



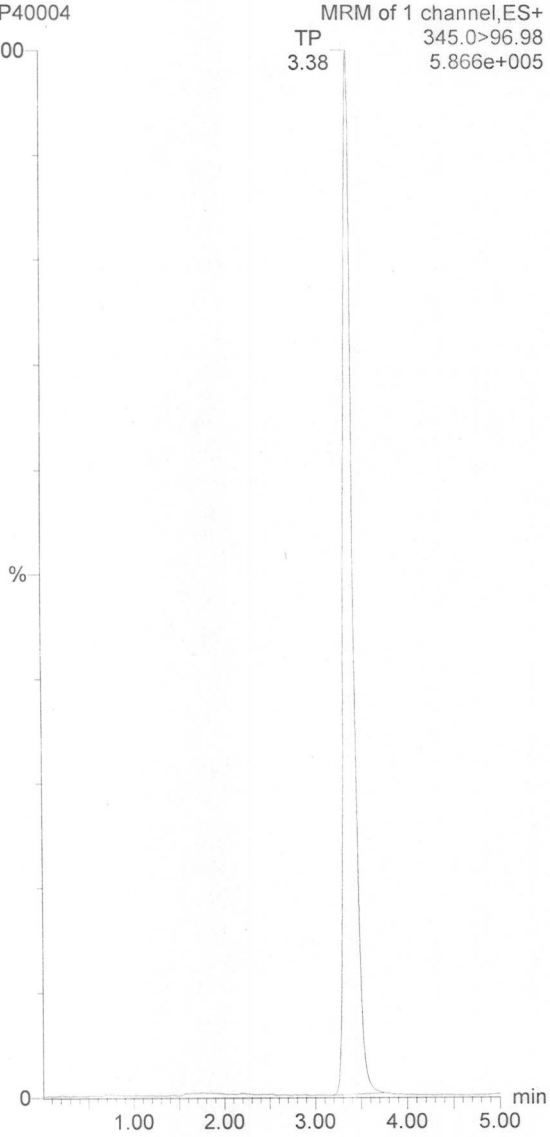
#	Name	Area	Conc.	RT.	Primary Flags
1	TP	26140	20.2	3.38	bb

Dataset:
Signature: At Monday, September 15, 2014 13:30:03 China Standard Time
By
Reason processing data
Printed: At Monday, September 15, 2014 17:14:40 China Standard Time
By

Name: TP40004, Date: 15-Sep-2014, Time: 10:28:54, ID: W4, Description: TP Std 50.0 ng/mL

TP

TP40004



#	Name	Area	Conc.	RT.	Primary Flags
1	TP	70344	49.8	3.38	bb

Dataset:
Signature: At Monday, September 15, 2014 13:30:03 China Standard Time
By
Reason processing data
Printed: At Monday, September 15, 2014 17:14:40 China Standard Time
By

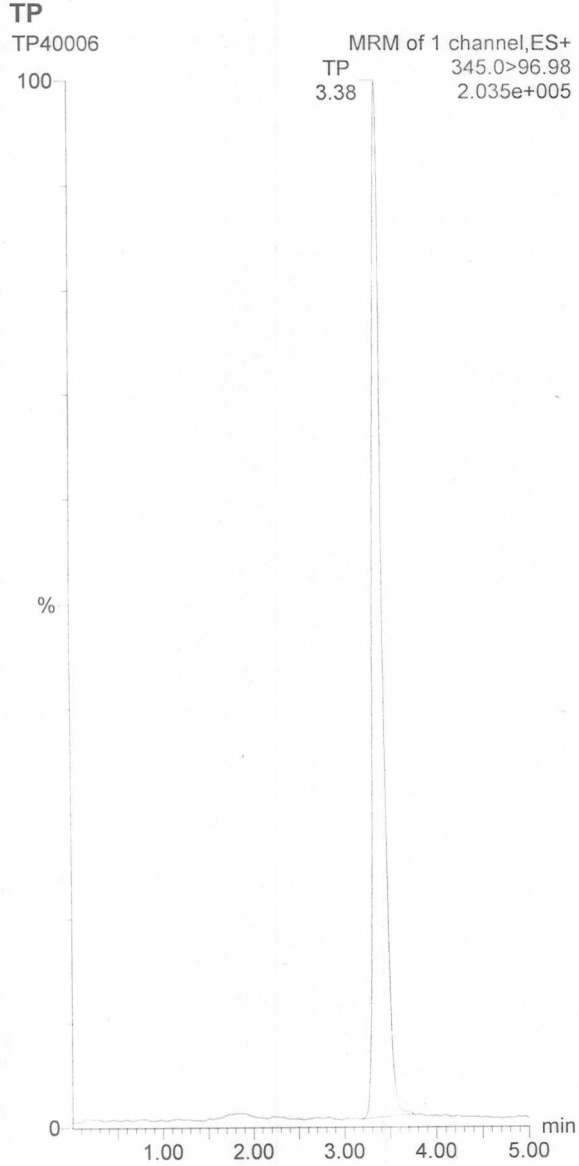
Name: TP40005, Date: 15-Sep-2014, Time: 10:34:34, ID: W5, Description: TP Std 100 ng/mL



#	Name	Area	Conc.	RT.	Primary Flags
1	TP	146682	97.1	3.38	bb

Dataset:
Signature: At Monday, September 15, 2014 13:30:03 China Standard Time
By
Reason processing data
Printed: At Monday, September 15, 2014 17:14:40 China Standard Time
By

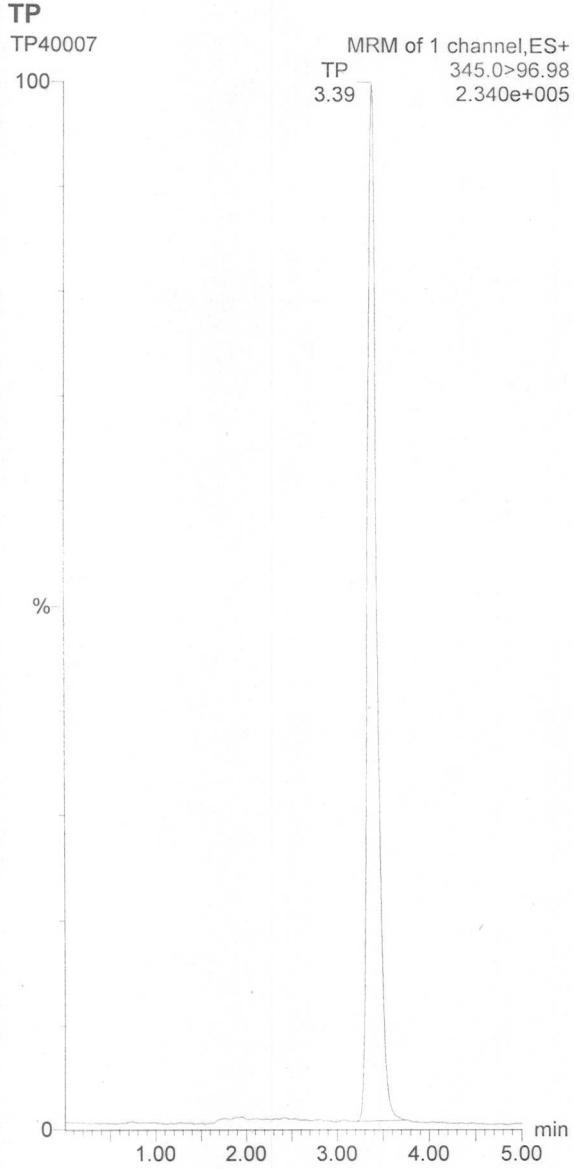
Name: TP40006, Date: 15-Sep-2014, Time: 10:40:15, ID: , Description: TP Sample 20.0 ng/mL



#	Name	Area	Conc.	RT.	Primary Flags
1	TP	24401	19.0	3.38	bb

Dataset:
Signature: At Monday, September 15, 2014 13:30:03 China Standard Time
By
Reason processing data
Printed: At Monday, September 15, 2014 17:14:40 China Standard Time
By

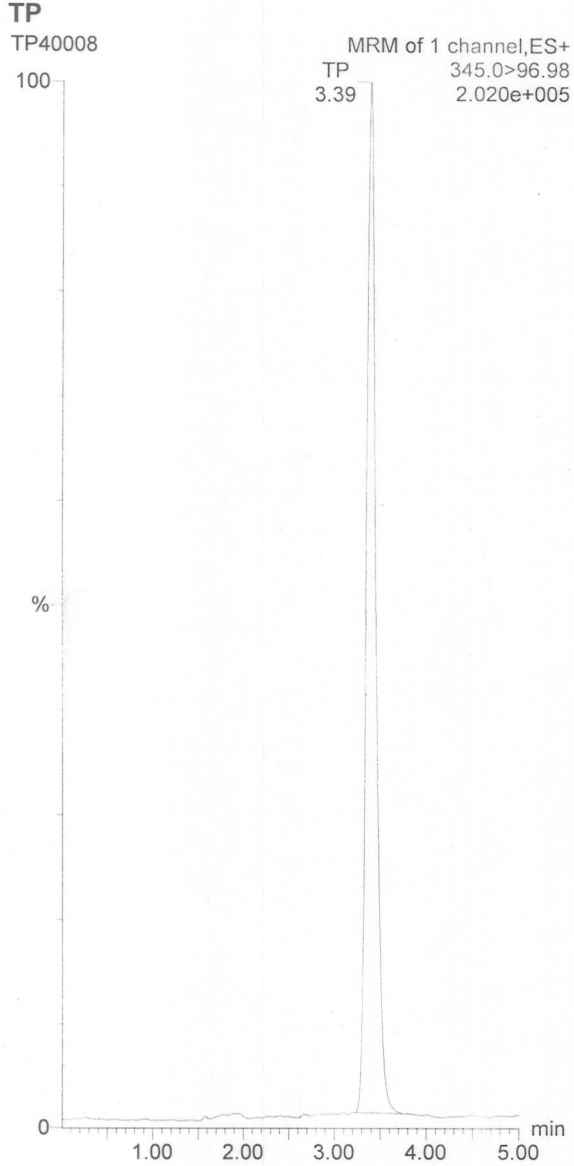
Name: TP40007, Date: 15-Sep-2014, Time: 10:45:56, ID: , Description: TP Sample 20.0 ng/mL



#	Name	Area	Conc.	RT.	Primary Flags
1	TP	27780	21.4	3.39	bb

Dataset:
Signature: At Monday, September 15, 2014 13:30:03 China Standard Time
By
Reason processing data
Printed: At Monday, September 15, 2014 17:14:40 China Standard Time
By

Name: TP40008, Date: 15-Sep-2014, Time: 10:51:36, ID: , Description: TP Sample 20.0 ng/mL



#	Name	Area	Conc.	RT.	Primary Flags
1	TP	23951	18.7	3.39	bb

AR47 Testosterone propionate (TP)

HPLC Condition

Solvent A: 0.1% Formic Acid in Water

Solvent B: 0.1% Formic Acid in Acetonitrile

Mobile Phase: Solvent A:Solvent B (5:95, v/v)

Flow Rate (mL/min): 0.3

Column: Waters Atlantis dC18, 150 × 2.1 mm, 5 µm, Column

	Calculated Conc.(ng/mL)	Mean Actual Conc.(ng/mL)	Theoretical Conc.(ng/mL)	Assay Percent %
S1-1	19.0	19.7	20.0	98.5
S1-2	21.4			
S1-3	18.7			